

WELLMASTER Pipe & Supply Inc.

1494 Bell Mill Road, P.O. Box 456, Tillsonburg, Ontario, Canada, N4G 4J1

Toll Free: 1.800.387.9355

Phone: 519.688.0500

Fax: 519.688.0563

Email: wells@wellmaster.ca

Website: www.wellmaster.ca




Make a Difference!

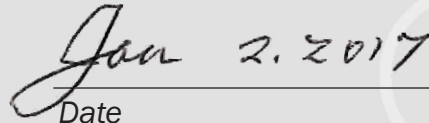
Statement of Policy

Wellmaster Pipe & Supply Inc. shall provide quality products and services at agreed customer specifications and dates using safe work practices and within a healthy work environment.

Wellmaster's management and employees are committed to continually improving the quality of its products and services with the practices, procedures, policies, organization of the corporation and specifications of our customers.



Doug White, President



Date

Wellmaster Safety Policy

We will create and maintain an environment at Wellmaster where everyone's Health & Safety is unchanged before and after each and every day.

Wellmaster Management is committed to zero injuries and a safe and healthy environment and workplace for all.

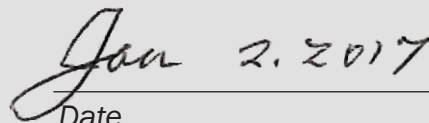
To eliminate injury and illness, Employees shall work safely and report any unsafe or unhealthy conditions to Management. Supervisors shall ensure safe and healthy conditions are maintained in the areas they control and will continuously attempt to improve the working conditions at Wellmaster.

Management, Supervision and Workers shall combine their experience and knowledge to operate the facility in a manner that will meet or exceed all safety and environment regulations.

Contractors and Visitors at Wellmaster are expected to be in compliance with all safety procedures while on the premises.



Doug White, President



Date

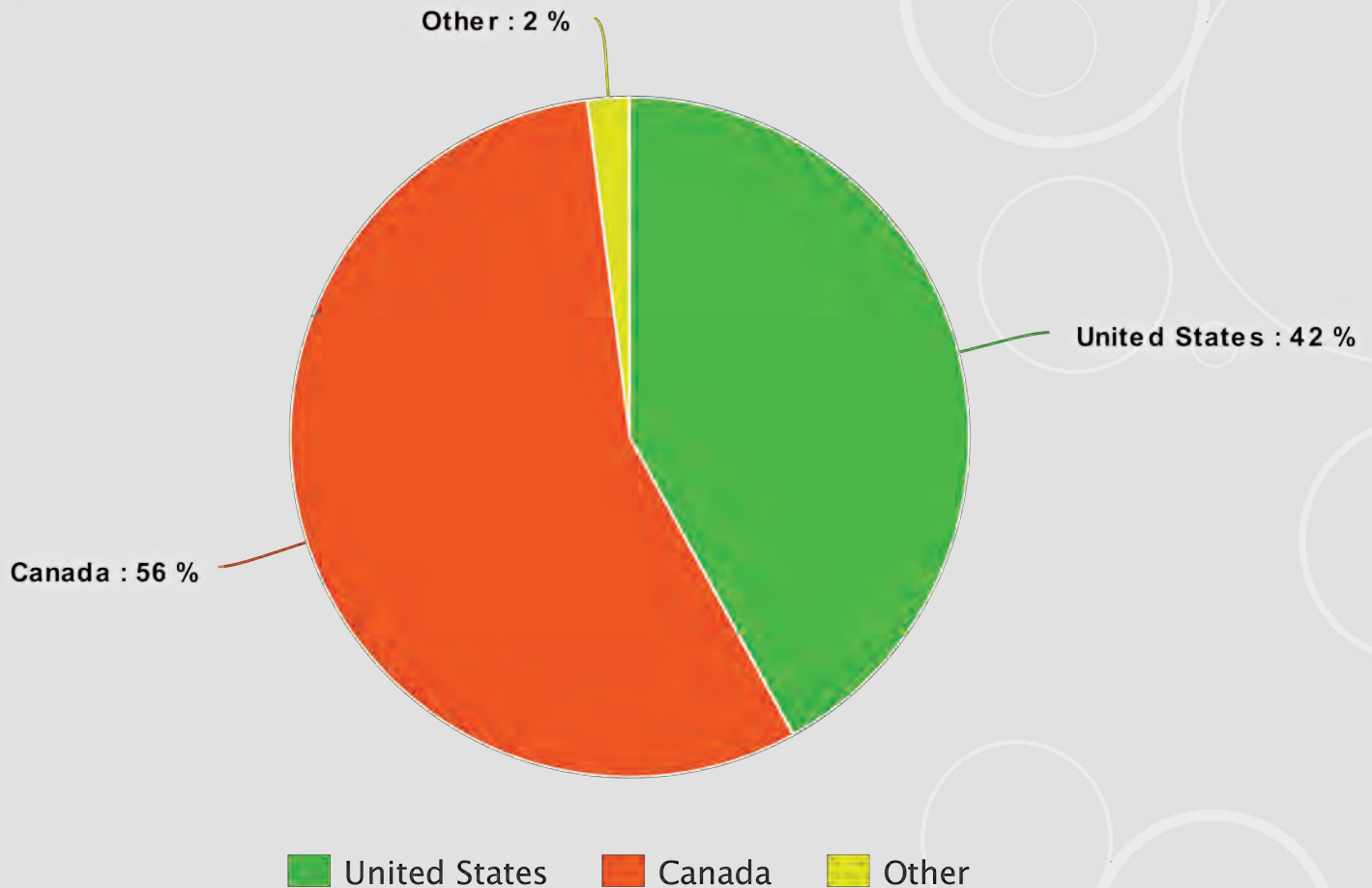


Wellmaster Quality Control Standards

- ◆ *API (American Petroleum Institute) 5CT - 0141*
- ◆ *AWS (American Welding Standards) D1.11D1.1M: 2006*
- ◆ *TSSA (Technical Standards & Safety Authority) Catagory A Type fittings only in accordance with CSA Standard B51*
- ◆ *CSA (Canadian Standard Association) Classes and agreement files covered C385101 liquid pumps*
- ◆ *SPC (Statistical Process Control)*



Product Destination (Sales Dollars)





Wellmaster Site Overview

- ◆ *60,000 square foot facility on a 10 acre site*
- ◆ *New switching gear, 750 KVA transformer and buss ducts*
- ◆ *Wellmaster has their own water well on site*
- ◆ *An environmental processing system is in place*
- ◆ *5 tonne overhead crane*
- ◆ *Non-destructive hydro-static testing*
- ◆ *CNC lathes*
- ◆ *ABB semi-automated welding cells*
- ◆ *3D design software by Autodesk and others*



From Left to Right:

- George Klassen**, Ext. 232, Email: georgek@wellmaster.ca, Cell: 519-983-6368
- Aaron Garrison**, Ext. 204, Email: agarr@wellmaster.ca, Cell: 226-236-6089
- Jake Friesen**, Email: jfriesen@wellmaster.ca, Cell: 226-231-1302
- Nancy MacDonald**, Ext. 211, Email: nmacdonald@wellmaster.ca
- Doug White**, Ext. 217, Email: dwhite@wellmaster.ca, Cell: 519-403-8090
- Marilyn Masse**, Ext. 214, Email: mmasse@wellmaster.ca



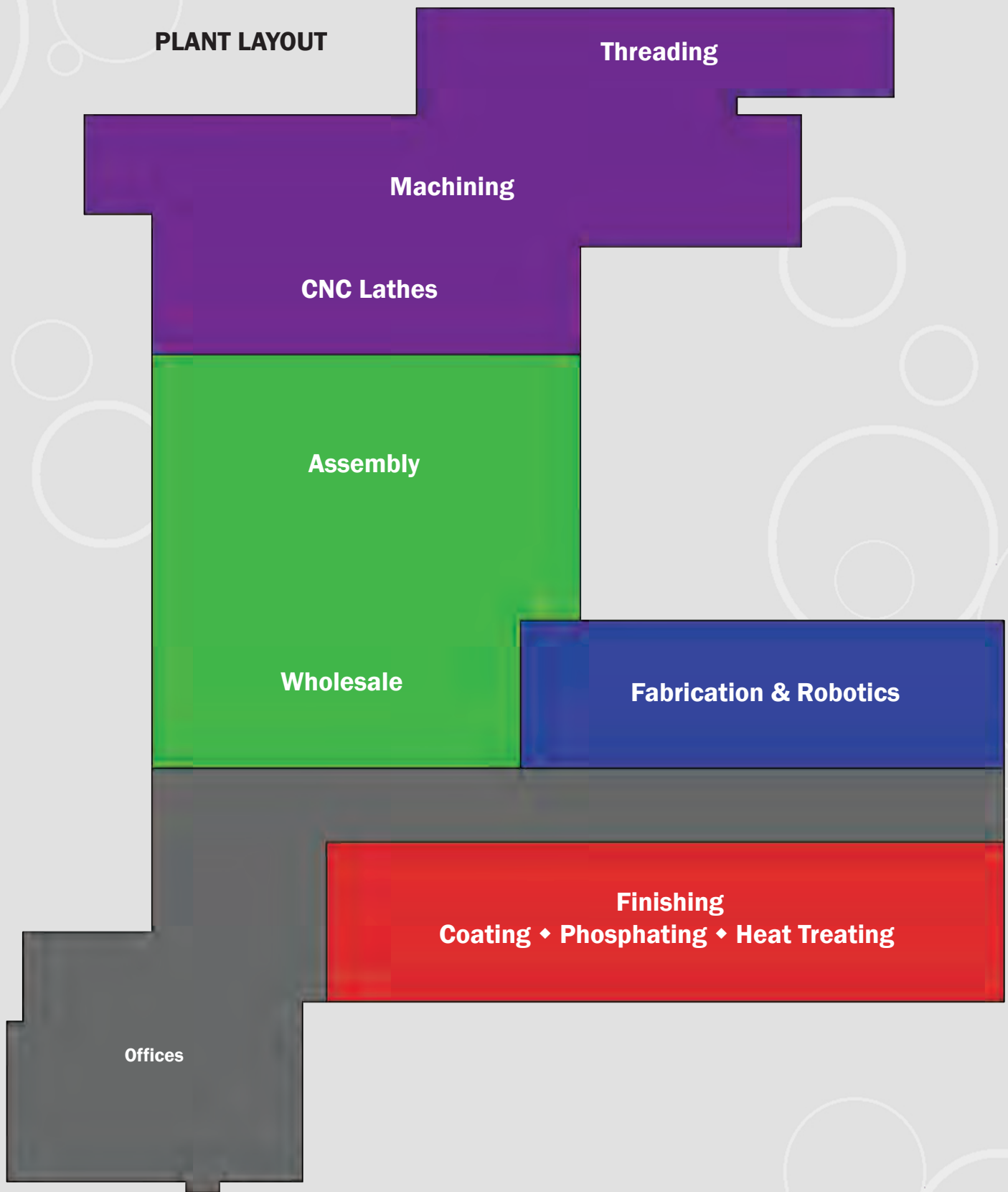
From Left to Right:

- Terry Platteuw**, Ext. 201, Email: terryp@wellmaster.ca, Cell: 226-236-1089
- Ena Fitz-Gerald**, Ext. 234, Email: efitz@wellmaster.ca
- Pete Wiebe**, Ext. 213, Email: pwiebe@wellmaster.ca, Cell: 519-983-6011
- Mike Ruppert**, Ext. 231, Email: mruppert@wellmaster.ca, Cell: 519-403-4788
- Jeff Hanson**, Ext. 218, Email: jhanson@wellmaster.ca, Cell: 519-983-8006
- Pedro Friesen**, Ext. 226, Email: pfriesen@wellmaster.ca, Cell: 519-421-5701



From Left to Right:

- Frank Mueller**, Cell: 519-983-6007
- Greg Fleet**, Ext. 228, Email: gfleet@wellmaster.ca
- Chris Crowell**, Ext. 223, Email: ccrowell@wellmaster.ca
- Isaak Klassen**, Ext. 228, Email: iklassen@wellmaster.ca
- Rob Weinberger**, Cell: 519-983-6009
- Brian Dejaegher**, Ext. 225, Email: bdejaegher@wellmaster.ca
- Cam Campbell**, Ext. 220, Email: ccampbell@wellmaster.ca, Cell: 519-983-6006
- Pat Abram**, Email: pabram@wellmaster.ca, Cell: 705-529-8455
- Mike Brindley**, Ext. 229, Email: mbrindley@wellmaster.ca, Cell: 519-537-0559



Assembly

Bevelling

Buck On

CAD Design

Coating

Cutting

Gauging

Induction Heating

Machining

Material Handling

Non-destructive Hydrotesting

Phosphating

Robotics

Stenciling

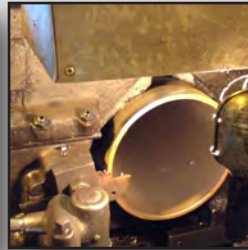
Threading

Warehousing

Assembly



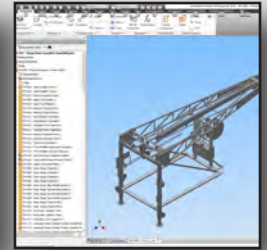
Bevelling



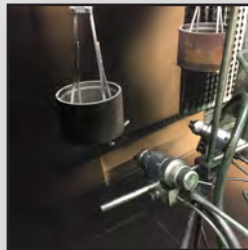
Buck On



CAD Design



Coating



Cutting



Cutting



Gauging



Gauging



Induction Heating



Machining



Material Handling



Material Handling



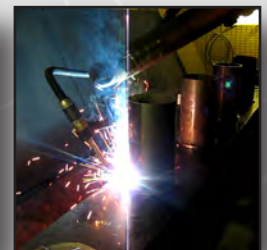
Non-Destructive Hydrotest



Phosphating



Robotics



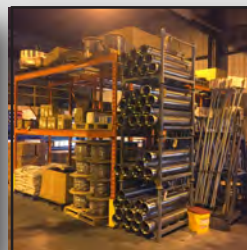
Stenciling



Threading



Warehousing



Warehousing



API
Couplings



Reamed & Drifted
Couplings



Merchant
Couplings



TSSA
Couplings



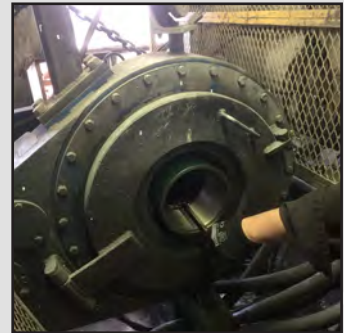
A coupling is a short length of pipe used to join two pipes together. They are often threaded internally on both ends. Wellmaster specializes in API grade couplings, reamed and drifted couplings, adapter couplings, weld rings and line pipe couplings.

Wellmaster API couplings are produced to American Petroleum Institute (API) international standards with close in-plant quality assurance controls. Detailed inspection reports accompany every shipment and each coupling is carefully and thoroughly inspected.

Wellmaster's quality processes include: raw material verification, wet mag particle testing, dimensional checks, serial number identifications, and inspection reports.

Our plating process closely maintains consistent plating on all machined surfaces.

Wellmaster has produced and sold couplings to the Canadian, U.S. and world markets. The Wellmaster name assures the best quality available. The employees at Wellmaster have served the drilling industry for over 30 years.

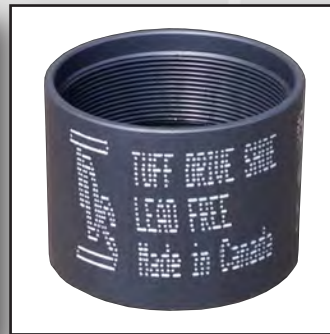




A drive shoe is a beveled-edge sleeve or coupling that is attached to the bottom of pipe or casing to act as a cutting edge in most casing advancement systems. It also acts as a protector for the pipe/casing to prevent splitting. Due to the stress and wear on drive shoes, each shoe is hardened to increase its life.

Tuff Drive Shoes are made from quality steel tube. The boring and machining is done by our precision CNC lathes. Carefully controlled induction heating ensures uniform hardness around the entire cutting edge of the shoe. Wellmaster also tests the cutting edge regularly at various points to maintain proper and consistent hardness. We coat the entire shoe to prevent corrosion and rust. Part number identification is also included for ease of re-ordering and each **TDS** drive shoe is identified as Made In Canada and Lead Free. Wellmaster makes the best quality drive shoes on the market.

Wellmaster Drive Shoes come in 5 styles: **Cable Tool, Rotary, Threaded, Weld On** and **Budget**.



Wellmaster also offers **Ruff Drive Shoes** that feature 14 carbide buttons along the cutting edge of the shoe.





**OIL COUNTRY
TUBULAR
GOODS
(OCTG)
...
WATER
WELL**



Greenhouse, Nursery & Product Transportation



Wellmaster Wagons and Trailers are used for transporting products to and from the field to the greenhouse, nursery or garden center. Larger wagons or trailers are often used for transporting shipping racks and carts full of product throughout the nursery.

Wagons are made from an all steel construction and feature a four wheel steering turn radius for enhanced maneuverability. This allows Wagons to be towed in a train. Wagons are also primed and painted or galvanized. Custom sizes are available to best suit various environments.

Trailers are also made from all steel construction for durability and primed and painted green. Rear loading ramps are used to quickly load and unload product. Its dual tandem axle allows maneuverability over rough terrains.



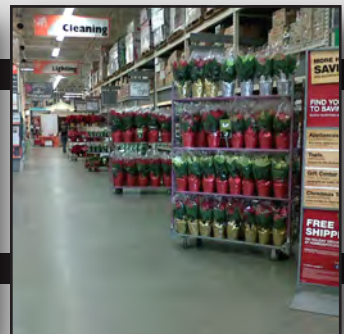
Greenhouse, Nursery & Product Transportation



Wellmaster Carts and Racks are ideally suited for shipping a wide variety of products including bedding plants, perennials and hanging baskets.

Carts and Racks are made from an all steel construction with a hot-dip galvanized finish. Shelves are removable, adjustable and come in expanded metal mesh or solid sheet steel options. Each Cart is equipped with 5", 8" or 10" casters to best suit its environment.

When not in use, Wellmaster Carts and Racks are fully collapsible for storage and transportation at the greenhouse, nursery or garden center.



Buy & Resell

Adapters

Black Plastic Pipe

Cables

Casters

Check Valves

Control Boxes

Drilling Fluids
Muds or Sands

Fittings

Nipples

Plain End Casing

Points

Protectors

PVC Pipe

Screens

Submersible Pumps
Flint & Walling

Submersible Pumps
Wilo

Sump Pumps

Tanks

Valves

Wire

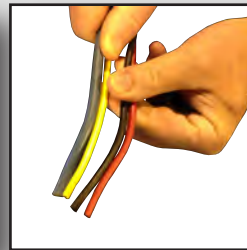
Adapters



Black Plastic Pipe



Cables



Casters



Check Valves



Control Boxes



Drilling Muds



Drilling Sands



Fittings



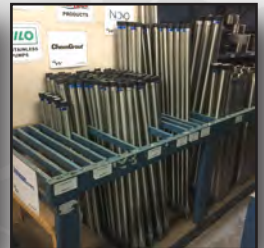
Nipples



Plain End Casing



Points



Protectors



PVC Pipe



Screens



Submersible Pumps



Sump Pumps



Tanks



Valves



Wire





CUSTOMER SERVICE
●●●
DELIVERY



Marketing

Alabama, US
(Mobile)

Alberta, CA
(Calgary)

Alberta, CA
(Edmonton)

British Columbia, CA
(Abbotsford)

Florida, US
(Fort Lauderdale)

Florida, US
(Orlando)

Georgia, US
(Atlanta)

Maryland, US
(Baltimore)

Massachusetts, US
(New England)

Michigan, US
(Grand Rapids)

Nevada, US
(Las Vegas)

Ohio, US
(Columbus)

Ontario, CA
(Niagara Falls)

Pennsylvania, US
(Lancaster)

Tennessee, US
(Nashville)

Texas, US
(Dallas)

Alabama, US
(Mobile)



Alberta, CA
(Calgary)



Alberta, CA
(Edmonton)



British Columbia, CA
(Abbotsford)



Florida, US
(Fort Lauderdale)



Florida, US
(Orlando)



Georgia, US
(Atlanta)



Maryland, US
(Baltimore)



Massachusetts, US
(New England)



Michigan, US
(Grand Rapids)



Nevada, US
(Las Vegas)



Ohio, US
(Columbus)



Ontario, CA
(Niagara Falls)



Pennsylvania, US
(Lancaster)

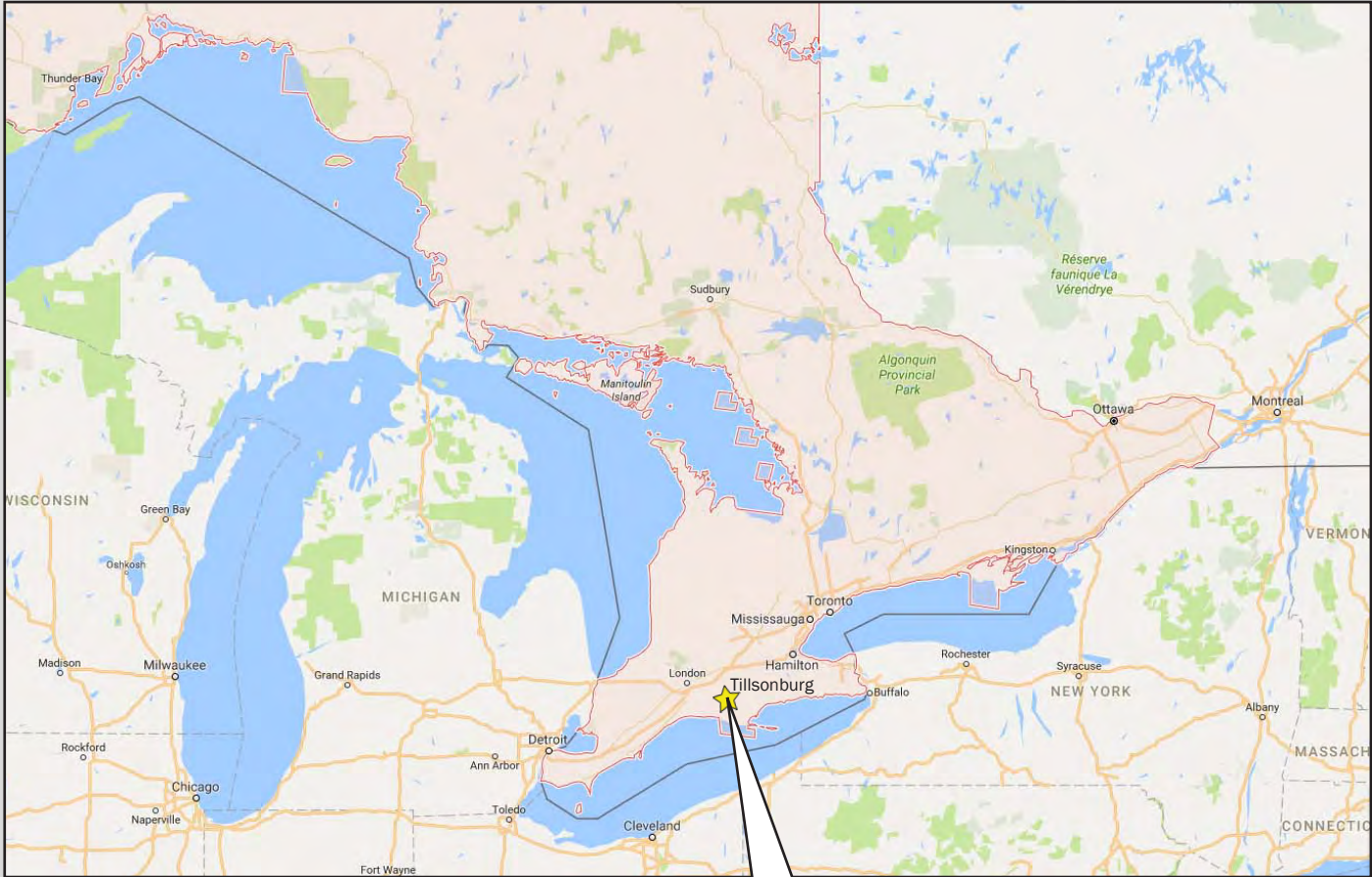


Tennessee, US
(Nashville)



Texas, US
(Dallas)





WELLMASTER
Pipe & Supply Inc.

1494 Bell Mill Road, P.O. Box 456,
Tillsonburg, Ontario, Canada, N4G 4J1